



PROTEKT®

MK 2

Rescue device



EN 341:2011 Class D



Cat no.: **AR 010**

The MK 2 evacuation and rescue device is designed for safe evacuation of people from heights, in accordance with EN 341: 2011 class D standard. The mechanism of the device is equipped with a use marker that breaks off during the evacuation descent. After using the MK 2 device, it is necessary to carry out a technical inspection and reattach the use marker.

The MK 2 evacuation device can be used during rescue operations in situations where:

- there is a need to evacuate from a position at height, such as an hoist basket;
- there has been fall arrest using fall protection equipment and the worker is located at a distance from the fixed elements of the structure (the possibility of the descent of 2 people).

- 👍 Maximum working load: **200 kg**
- 👍 Minimum working load: **50 kg**
- 👍 Maximum descent height: **100 m**
- 👍 Aluminum alloy mechanism weight: **531 g**
- 👍 Descent mechanism secured with a use marker



WWW.PROTEKT.UK

PROTEKT®

OFFICE - Skromna 6, 93-405 Lodz, POLAND / REGISTERED ADDRESS - PROTEKT Grzegorz Łaszkiwicz Sp. z o.o.
Starorudzka 9, 93-403 Lodz, POLAND / SALES DEPARTMENT Phone +48 42 29-29-500, export@protekt.com.pl, fax +48 42 680-20-93
WAREHOUSE - Gombrowicza 6, 93-405 Lodz, POLAND



MK 2 Rescue device

EN 341:2011 Class D



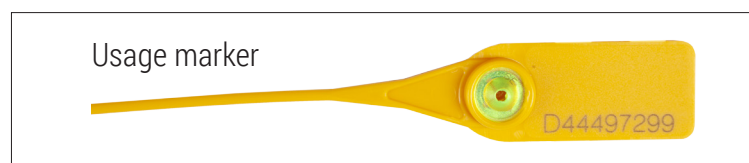
MK II set includes:

- descent mechanism
- escape rope \varnothing 11 mm
- webbing sling AZ 900 30
- 3 snap hooks AZ 011
- bag
- knife



MK 2 set: available working rope lengths **10** to **100** m

Cat. no.:	set weight	cena netto pln
AR 010 010 - 10 m	2,56 kg	1390,-
AR 010 020 - 20 m	3,33 kg	1580,-
AR 010 025 - 25 m	3,80 kg	1675,-
AR 010 030 - 30 m	4,11 kg	1770,-
AR 010 040 - 40 m	4,89 kg	1960,-
AR 010 050 - 50 m	5,66 kg	2150,-
AR 010 100 - 100 m	9,55 kg	3100,-



WWW.PROTEKT.UK



OFFICE - Skromna 6, 93-405 Lodz, POLAND / REGISTERED ADDRESS - PROTEKT Grzegorz Łaszkiwicz Sp. z o.o.
 Starorudzka 9, 93-403 Lodz, POLAND / SALES DEPARTMENT Phone +48 42 29-29-500, export@protekt.com.pl, fax +48 42 680-20-93
 WAREHOUSE - Gombrowicza 6, 93-405 Lodz, POLAND



MK 2 Rescue device

EN 341:2011 Class D



Dedicated transport bags for sets with a rope from **10** to **100 m** only with the PROTEKT print in yellow.

Capacity
7 liters



Rope length

AR 010 010 - 10 m
AR 010 020 - 20 m

Capacity
19 liters



Rope length

AR 010 025 - 25 m
AR 010 030 - 30 m

Capacity
50 liters



Rope length

AR 010 040 - 40 m
AR 010 050 - 50 m

Capacity
70 liters



Rope length

AR 010 100 - 100 m

WWW.PROTEKT.UK

PROTEKT

OFFICE - Skromna 6, 93-405 Lodz, POLAND / REGISTERED ADDRESS - PROTEKT Grzegorz Łaszkiwicz Sp. z o.o.

Starorudzka 9, 93-403 Lodz, POLAND / SALES DEPARTMENT Phone +48 42 29-29-500, export@protekt.com.pl, fax +48 42 680-20-93

WAREHOUSE - Gombrowicza 6, 93-405 Lodz, POLAND