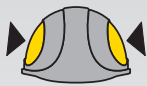


ATRA 20S

Industrial safety helmet with internal visor and external face shield



EN 397:2012+A1:2012



✓ LD - Lateral Deformation



✓ Impact resistance



✓ MM - Resistance to molten metal splash



✓ Tested at very low temperature (-30°C)



✓ Lightweight and durable ABS plastic construction; weight **740 g**



CLASS 1

GS-ET-29: 2019-06



EN 166 / EN 170

- ✓ 1 optical class,
- ✓ resistance to high energy impact 190 m/s (A)
- ✓ protection against arc flash
- ✓ protection against UV radiation
- ✓ protection from hazardous materials such as liquids, molten metals, hot solids and chemicals

2 face shield positions (open and closed)

WWW.PROTEKT.UK



EN 50365: 2002

✓ Designed for work on low-voltage installations to **1000V AC** or **1500V DC**



Available colors:

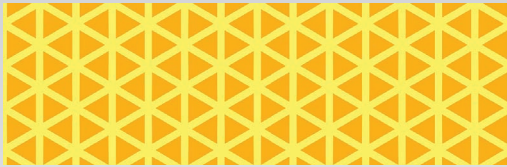




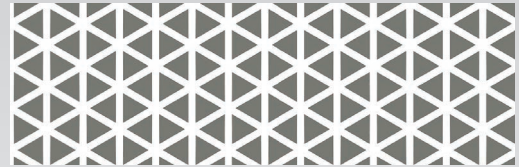
ATRA 20 / ATRA 20S

Reflective stickers for helmets Atra 20 / Atra 20S.

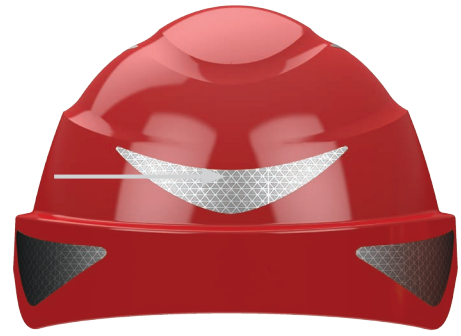
Prismatic (triangular) pattern.



Gold color



Silver color



WWW.PROTEKT.UK






PROTEKT[®]

OFFICE - Skromna 6, 93-405 Lodz, POLAND / CORRESPONDENCE ADDRESS - PROTEKT, Starorudzka 9, 93-403 Lodz, POLAND
SALES DEPARTMENT Phone +48 42 29-29-500, export@protekt.com.pl, fax +48 42 680-20-93
WAREHOUSE - Gombrowicza 6, 93-405 Lodz, POLAND



ATRA 20 / ATRA 20S

Comparison of the main parameters

		ATRA 10	ATRA 10V	ATRA 10 + ATRA S10	ATRA 20	ATRA 20S
	STANDARDS / requirements					
	EN 397					
	Chinstrap included	✓	✓	✓	✓	✓
	Ventilation holes		✓			
Additional requirements	Very low temperature (-20/-30°C)	-30°C	-30°C	-30°C	-30°C	-30°C
	Electroinsulation (440V)	✓		✓	✓	✓
	Lateral Deformation (LD)	✓	✓	✓	✓	✓
	Resistance to splashes of molten metal				✓	✓
	EN 50365					
	Electroinsulation to 1000V AC/1500 DC	✓		✓	✓	✓
	EN 166					
Mandatory requirements	Internal visor retractable under the helmet				✓	✓
	Optical class (I, II lub III)			I	I	I
	Injection molded visor / face shield				✓	✓
	Ultraviolet protection filters					✓
	Low energy impact F (45 m/s)			✓	✓	✓
	Medium energy impact B (120 m/s)			✓	✓	✓
	High energy impact A (190 m/s)					✓
	Protection against molten metals and hot solids			✓		✓
	Protection against liquid splashes and drops			✓		✓
	Protection against arc flash protection					✓
	Lateral protection			✓	✓	✓
	GS-ET-29:2019/06					
	Arc flash protection					class 1

WWW.PROTEKT.UK